

# SNIPER SUIT

The design and manufacture for the material of the Sniper Suit is to break the human outline in all surrounding background environments for maximum concealment. Not only customized to colour pattern and surface texture but it is also thermal treated on request.



The fabric itself is adopt to environmental temperature change with automatic cooling and heating function as follows:

- ❑ No change on outside temperature at 10°C and 20°C
- ❑ Outside temperature over 30°C, lower temperature of the suit by 10 ± 1°C
- ❑ Outside temperature less 5°C, increase temperature inside the suit by 7.5 ± 1°C

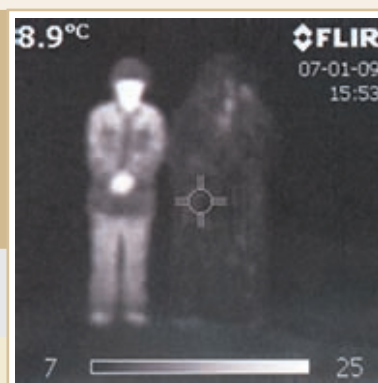
The suit consist:-

- ❑ Pants
- ❑ Jacket

Optional

- ❑ Mask
- ❑ Helmet
- ❑ Weight approx: 2.8 kg
- ❑ Remarkable moisture permeability of the fabric that can discharge sweat outside

## THERMAL ATTENUATION TEST



Thermal Image Black & White



Thermal Image Rainbow